



GF-9 mounted on Crane Base



GF-9 mounted on Tripod



GF-9 Camera Crane

The GF-9 Crane is a professional, lightweight modular crane system for use with cameras and remote head systems.

At a maximum height of 10 m / 33 ft it will carry a remote head and camera system of 25 kgs / 55 lbs. All other versions carry at least 30 kg / 66 lbs and versions under 6 m / 20 ft even carry 45 kg / 99 lbs.

The GF-9 is a very portable and mobile crane system, designed with safety, ease of transportation and stability in mind.

It mounts on a purpose built tripod which enhances the system's travelling mode. The GF-9 can also fit on the GF-8 Base Dolly and in fact most standard dolly systems with Euro-adaptor or Mitchell mounts.

The Hard Coated® arm consists of a dedicated rear section plus 5 identical 1.5 m / 5 ft front sections. Both a 1 m / 3ft section and a 50 cm / 1' 6" section are available as either short rear or additional front sections allowing for more variations in crane lengths. The arm is stabilized with an easy to mount, rod rigging system. To simplify assembly, all front rods are identical.

In its longest 10 m / 33 ft version the complete GF-9 arm weighs in at 143 kg / 314 lbs.

As confirmation of GFM's high manufacturing and safety standards, the TÜV Süddeutschland have safety type tested and approved the GF-9 Crane System according to European guidelines for the scope of application under EC directives especially EC directive 98 / 37 / EC. This certification is based on state-of-the-art-technology.

Features:

- Remote operation up to a height of 10 m / 33 ft
- Dedicated tripod
- Dedicated dolly system (GF-8)
- Fits on most other dollies
- Ground or track use
- Accommodates remote heads/cameras up to 25 kg / 55 lbs and 45 kg / 99 lbs
- Fast and easy set-up
- Extremely lightweight parts
- Interchangeable extensions
- Stable rigid arm
- Aluminium alloy components
- Surface hardened finish (Hart-Coat®)
- TÜV Certified



Transport bag set for GF-9 Crane (K-1512)



One Man operation (camera and crane)



Crane operator

GF-9 Crane System

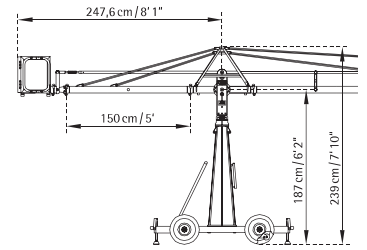
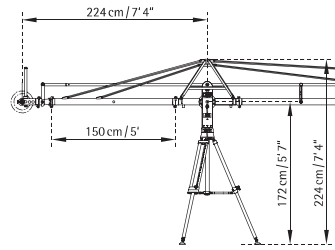
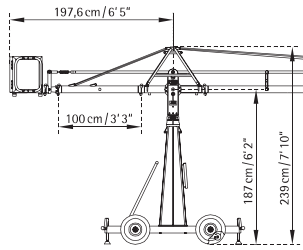
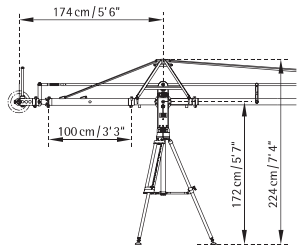


Grip Factory Munich GmbH
Fürholzener Straße 1
85386 Eching/Munich
Germany

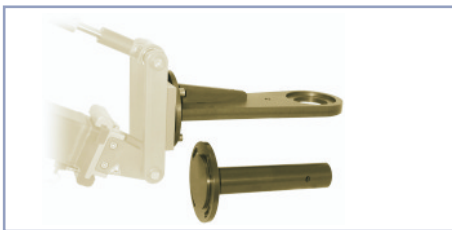
Tel.: +49 (0)89 / 31 90 12 90
Fax: +49 (0)89 / 31 90 12 99
E-Mail: info@g-f-m.net
Internet: www.g-f-m.net

100cm/3'3" rear section for versions up to 780cm/25'7"

150cm/5' rear section for versions up to 1005cm/33'



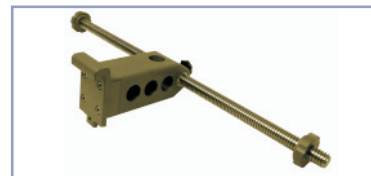
Version	Max. Height	Front reach	Front Extensions	Max. Payload	Counterweight at max. payload	Counterweight to balance empty arm	Transport weight w/o weights or dolly
1	376 cm / 12' 7"	258 cm / 8' 5"	1x 150 cm / 5'	45 kg / 99 lbs	28 kg / 61 lbs	-	92 kg / 202 lbs
2	466 cm / 15' 3"	335 cm / 10' 11"	1x 150 cm / 5' + 1x 100 cm / 3' 3"	45 kg / 99 lbs	64 kg / 140 lbs	-	98 kg / 215 lbs
3	511 cm / 16' 9"	385 cm / 12' 7"	2x 150 cm / 5'	45 kg / 99 lbs	84 kg / 184 lbs	8 kg / 17.6 lbs	101 kg / 222 lbs
4	601 cm / 19' 8"	485 cm / 15' 10"	2x 150 cm / 5' + 1x 100 cm / 3' 3"	45 kg / 99 lbs	126 kg / 277 lbs	22 kg / 48.4 lbs	108 kg / 237 lbs
5	646 cm / 21' 2"	535 cm / 17' 6"	3x 150 cm / 5'	30 kg / 66 lbs	106 kg / 233 lbs	36 kg / 79 lbs	112 kg / 246 lbs
6	735 cm / 24' 1"	635 cm / 20' 10"	3x 150 cm / 5' + 1x 100 cm / 3' 3"	30 kg / 66 lbs	140 kg / 308 lbs	50 kg / 110 lbs	118 kg / 259 lbs
7	780 cm / 25' 7"	685 cm / 22' 5"	4x 150 cm / 5'	30 kg / 66 lbs	204 kg / 448 lbs	64 kg / 140 lbs	122 kg / 268 lbs
8	870 cm / 28' 6"	785 cm / 25' 9"	4x 150 cm / 5' + 1x 100 cm / 3' 3"	30 kg / 66 lbs	224 kg / 492 lbs	84 kg / 184 lbs	128 kg / 281 lbs
9	915 cm / 30'	835 cm / 27' 4"	5x 150 cm / 5'	30 kg / 66 lbs	238 kg / 523 lbs	112 kg / 246 lbs	138 kg / 303 lbs
10	1005 cm / 32' 11"	935 cm / 30' 8"	5x 150 cm / 5' + 1x 100 cm / 3' 3"	25 kg / 55 lbs	252 kg / 554 lbs	140 kg / 308 lbs	143 kg / 314 lbs



Remote Bracket with Mitchell Adapter (GF-9319)
Jimmy Jib Remote Bracket (GF-9318)



Adapter for GF-9 to Euroadapter (GF-9315)



Counterweight rod adapter incl. weight rod (GF-9317)



Adapter plate for GF-9 to Mitchell (GF-9316)



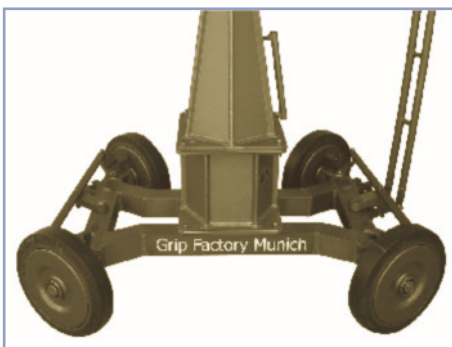
Counterweight bucket (GF-9125)



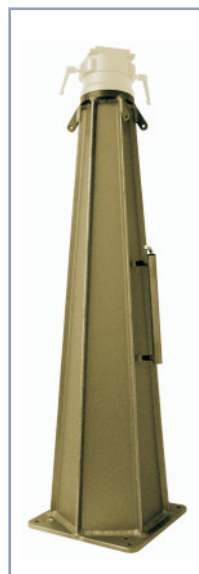
Monitor carrier for GF-9 arm (GF-9302)



Monitor carrier for pivot section (GF-9301)



Crane Dolly with optional double ended connected steering (GF-8000)



Mounting column for GF-9 (GF-9130)



Tripod for GF-9 Crane, adjustable height and levelling system (GF-9200)